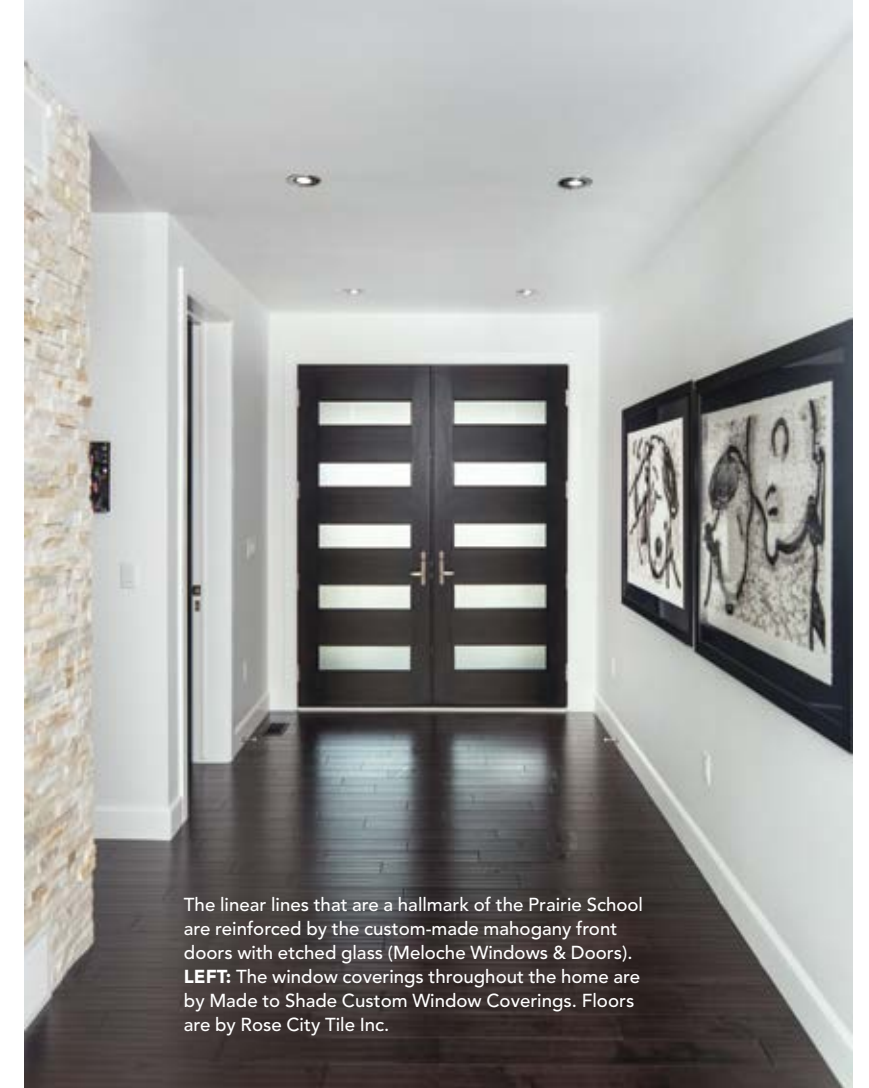


# THE CURATED HOME

STORY **NANCY BELGUE**  
PHOTOGRAPHY **MAX WEDGE**



The linear lines that are a hallmark of the Prairie School are reinforced by the custom-made mahogany front doors with etched glass (Meloche Windows & Doors). **LEFT:** The window coverings throughout the home are by Made to Shade Custom Window Coverings. Floors are by Rose City Tile Inc.

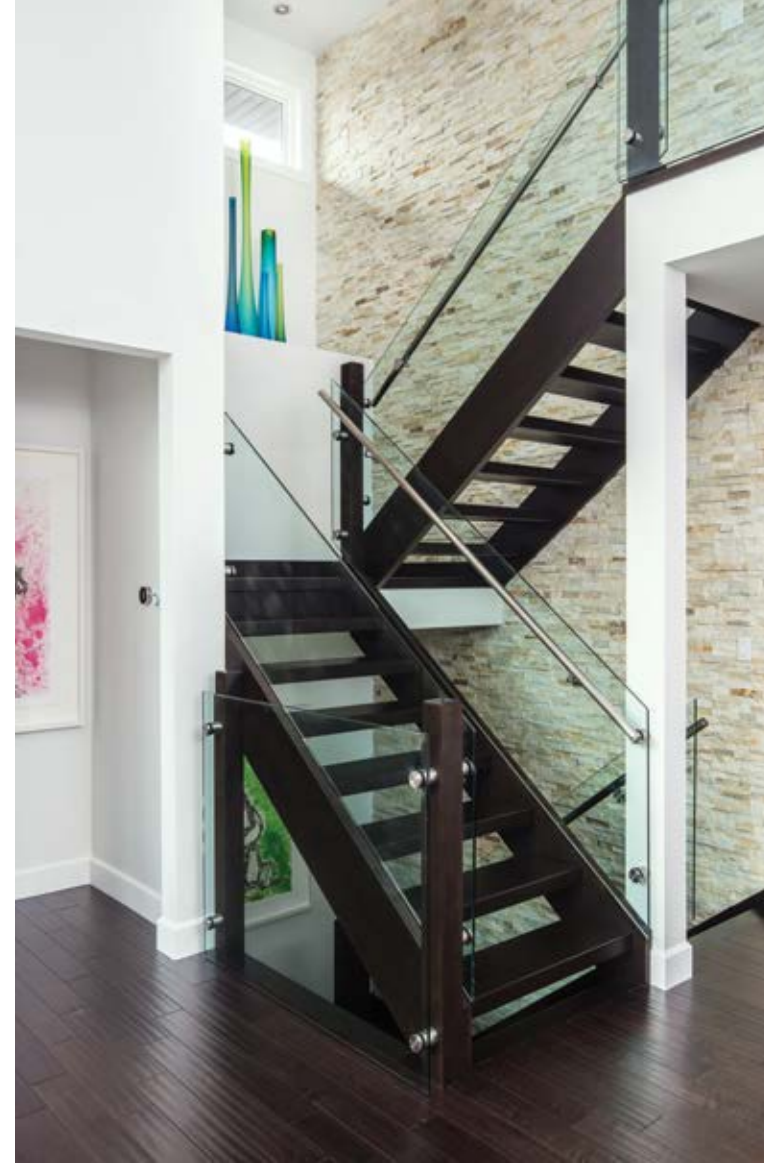


Designed by **Phil Fernandes** of **Phil Fernandes Design** and built by **Gino Piccioni** of **Timberland Homes**, this 3,350 sq. ft. home was conceived as a celebration of the homeowners' twin passions: art and architecture.

To realize their vision of a Frank Lloyd Wright-inspired, Prairie-style home, the homeowners did extensive research, including a pilgrimage to Oak Park, a suburb of Chicago. Oak Park, which boasts 25 buildings that were designed or remodelled by Wright, has the largest collection in the world. Inspired by what they saw, the couple compiled a list of Prairie-School details they wanted incorporated into their design: banded windows, overhanging eaves, use of natural materials, the use of outside materials inside the home and built-in furniture. *Continued on page 30*

**ABOVE:** "I tried to blend Frank Lloyd Wright's different iconic homes like Fallingwater and the Robie House," says Phil Fernandes of the stone and stucco exterior. "The double tiered planters ground the home and give it a horizontal presence. Lakeshore Landscaping really helped to create the whole look," he says. **RIGHT:** Gino Piccioni of Timberland Homes.





← This chandelier's hand-blown glass bowls are similar to a piece Tsunami Glassworks did for a condo in Yorkville. The shroud of clear panes is similar to one in Dubai. The homeowners combined the elements to create a stunning focal point.

The linear lines that define the home are exemplified by the floating wood wall and fireplace. **OPPOSITE, TOP LEFT:** The homeowner is a huge Blondie fan and the Debbie Harry image was what initially attracted him to the Song suite of Francesco Scavullo photographs. **TOP RIGHT:** The staircase, installed by Bay-View Glass & Mirror Ltd., brings the Frank Lloyd Wright style up to today's code with wood, stainless steel and grommets. **BOTTOM:** The bar's display nooks contain more colourful pieces by Tsunami Glassworks.

With their plans taking shape, the couple began looking for a team of local professionals that could translate their ideas into reality. "We met Phil through a mutual friend," they say and were impressed by his attention to detail. "I do my research," comments the homeowner, "Phil's name came up as someone known for unique and innovative work. And we wanted someone who was up-and-coming but experienced enough to do it right."

After the couple contracted Fernandes to do the design, he gave the homeowners a list of builders to interview and one of those names was Gino Piccioni. "After talking to a number of the names on the list, we chose Timberland because we felt Gino both understood what we were trying to achieve and was truly interested in the project," says the homeowner.

The home's architecture is a homage to the Wright Prairie-Style oeuvre but brought into the 21st century with the addition of modern materials and updated design. The open floor plan comprises an expansive entryway, a large kitchen and eat-in area adjoining a beautiful great room.

Pop art, whimsy and expressions of the cultural zeitgeist of the 60s and 70s are just some of the works of art found throughout the home. Always interested in art and collecting, the homeowners' passion truly crystallized with the building of the home they conceived as a place where "everything could be about the art." *Continued on page 32*





These silver mirrored gravity drops show how glass can be transformed by heat.



In the entryway, a pair of limited edition lithographs by Tom Everhart set the tone for the homeowners' individuality. The only artist educated and legally licensed by Charles Schulz to use the iconic subject matter from the beloved *Peanuts* comic strips to create fine art, Everhart is a favourite of the homeowners for his unique way of adding a different layer to Schulz's cartoons. Both engineers, the homeowners are the first to admit collecting art was a way for them to "step outside the box."

The kitchen (**Frank Cremasco Fine Cabinetry**) is an artistic expression in and of itself. Set off by the stunning work of **Tsunami Glassworks**, whose dramatic light fixtures float like glimmering red sea creatures against a backdrop of dark wood and white quartz, the one-of-a-kind, hand-blown orbs are truly unforgettable. **Tony Oliverio** at **Rose City Tile Inc.** worked with the couple to help select the subway-tile glass backsplash in rich, ruby red.

The great room is separated from the eating area by a floating floor-to-ceiling

*Continued on page 34*



**TOP LEFT:** The red tile backsplash precipitated a fiery discussion with builder Gino Piccioni. The homeowners' vision prevailed. **ABOVE:** Built by Frank Cremasco the desk is made from the same wood as the kitchen cabinets. The office chair matches the ones used at the kitchen island. The door repeats the pattern of the front doors. Deliberate, considered repetition is a Prairie School hallmark. **RIGHT:** Kitchen appliances are from Reis Appliance Ltd. **BOTTOM:** Two thirds of the dream team. Lakeshore Landscaping's Ryan Pawluk and Phil Fernandes of Phil Fernandes Design.





**ABOVE:** The pool is by Perciballi Pools & Spas. Patio furniture is from Bertoni Chairs & Things. **RIGHT:** The faux concrete wall is by Modern Moulding & Stucco Supply Ltd. It is trowelled like concrete and is mixed so that natural colour variations are created. The home is wired for sound by Factory Auto Sound.



This backyard fountain is an art installation in and of itself.

wood wall and fireplace (**Forest Glade Fireplaces**). Like every room in the house, the great room is thoughtfully configured and furnished to allow the art to shine. A low, super-cool, leather sectional (**Guaranteed A Fine Furniture**) and a custom designed carpet (**Bertoni Chairs & Things**) play off the marigold leather chair (also from Bertoni Chairs & Things). The carpet is a witty nod to the homeowners' artistic leanings – it looks like a splash of paint. The yin and yang glass sculpture on the coffee table is by Tsunami Glassworks as is the metal ribbon sculpture on the sofa table. The art wall that is the backdrop to the room showcases a suite of black and white photographs featuring pop culture icons like Cher, Janis Joplin, Sting and Debbie Harry. Entitled *Song*, the collection of images is by famed photographer Francesco Scavullo. "When we moved in here we were able to hang them together the way photographer Scavullo had envisioned," the homeowners say.

The extraordinary glass staircase, which is another nod to the updated Prairie-Style aesthetic the homeowners were working to create, was installed by **Bay-View Glass & Mirror Ltd.** It gives a modern, open feeling to the space and provides a clever way to showcase the Arriscraft stone wall.

*Continued on page 36*

**BAYVIEW**  
GLASS & MIRROR LTD.  
1455 Matthew Brady Windsor ON | info@bayviewglass.com  
519.94GLASS (944-5277) | www.BayviewGlass.com

Actual Projects

## Ensuring your loved ones are protected.

Life Insurance  
Critical Illness Protection  
Investment Strategies  
Retirement Planning  
Education Savings



**TOLMIE**  
FINANCIAL GROUP INC.

**Insurance and Investment Planning**  
1500 Ouellette Ave, Suite 305, Windsor, Ontario  
**519.258.5510** | [tolmiefinancial@cogeco.net](mailto:tolmiefinancial@cogeco.net)  
[www.tolmiefinancialgroup.com](http://www.tolmiefinancialgroup.com)



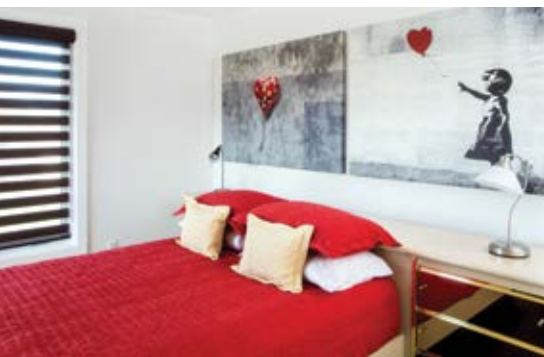
The glass shower in the en suite is from Lasalle Glass and Mirror. The sinks, tub and fixtures were sourced at WFS Ltd. Lights are from The Lighting Boutique and Appliance Shoppe.

The master bedroom features a rare limited edition lithograph by Theodor Geisel (aka Dr. Seuss). It shows Geisel's *Cat In The Hat* alter ego in a painting called *The Wisdom of the Orient Cat*. On the wall above the bed is a grouping of LP covers designed by Andy Warhol. The Velvet Underground and Nico covers featuring Warhol's iconic peel-able banana are very rare. The entire wall is a time machine, conjuring up the heady early days of high-octane creativity in Warhol's groundbreaking studio called The Factory.

Downstairs there is a gym (entered through a stunning, green-glass sliding barn door by Bay-View Glass), a crafting room, a

theatre room and a family room. Upstairs, in two of the additional three bedrooms, the art tour continues with a limited-edition SUMO book by Annie Liebowitz and graffiti prints by Banksy. In the "British invasion" room, lava lamps and a full set of original *Stern Magazine* psychedelic Beatles posters by Richard Avedon create a groovy ambience.

The stories that the homeowners have about building their home and for each piece of art in their home are endlessly fascinating. It is easy to see why one of their favourite quotes by renowned pop artist Roy Lichtenstein is a large part of their life philosophy: "Art doesn't transform it just plain forms." **OH**



**ABOVE:** Banksy graffiti prints give the guest bedroom a hip vibe. **MIDDLE RIGHT:** The SUMO book by Annie Liebowitz is only the second SUMO book ever issued and contains "monster representations of her photography." **RIGHT:** Bedding in the master bedroom is from Beddazzle Bedroom & Bath Studio.



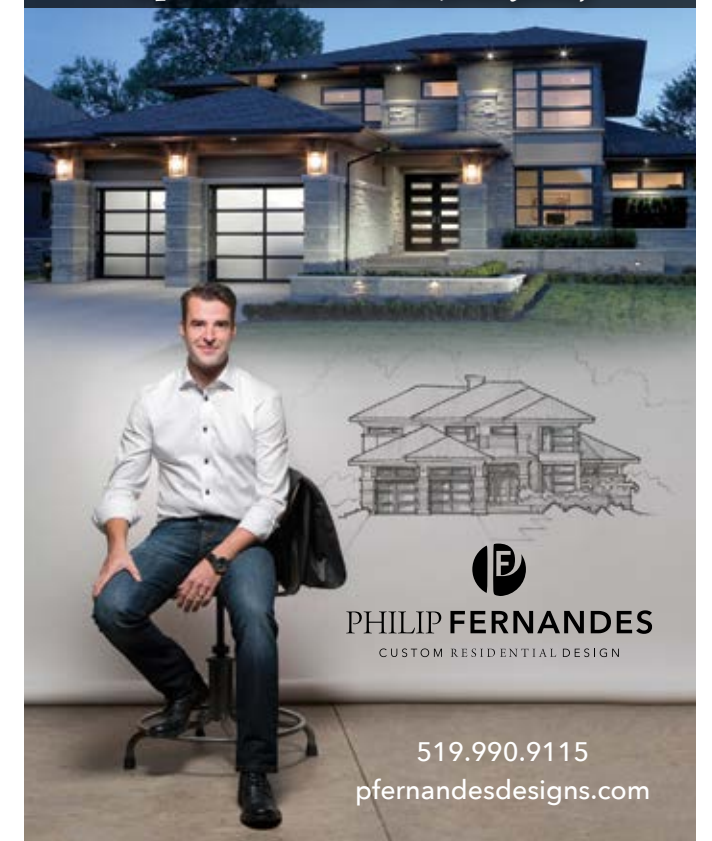
Let us bring the store to your door... we measure, we install, we do it all!



Buy factory direct and save \$  
**519-739-9797**  
[www.madetoshade.ca](http://www.madetoshade.ca)



Our home is truly unique – it's everything we hoped it would be! - *The Jones family*



**WECAR**  
WINDSOR-ESSEX COUNTY ASSOCIATION OF REALTORS®

Annual Charity  
**Golf Tournament**  
**MONDAY MAY 29, 2017**  
KINGSVILLE GOLF AND COUNTRY CLUB

Don't miss out on this event and a chance to support a great cause...

Benefitting : WECAR Bursary & Scholarship Program & Harmony In Action

**TICKETS \$115**

learn more... [golf.windsorrealstate.com](http://golf.windsorrealstate.com)  
519.966.6432 [windsorrealstate.com](http://windsorrealstate.com) [facebook.com/wecreators](https://facebook.com/wecreators)